



< 1511 >  
 HEDLER DX15



< 1516 >  
 HEDLER DF15



< 2516 >  
 HEDLER DX25



< 1625 >  
 HEDLER DF25

Thank you for choosing a Hedler light unit of the HEDLER DX- / DF-range and your confidence in the Hedler light system. Please, read the following technical informations and the Hedler safety instructions carefully before using the light unit. Codes are given in < brackets >.



### TECHNICAL DESCRIPTION

Light units of the HEDLER DX- and DF-range are designed for professional use, they are assembled by applying precision methods and tested individually for function and quality. The daylight flood light DX-light units as well as the focusable daylight DF-light units are provided with an integrated U-bracket and a friction brake and a 5/8" Quick-Lock light stand attachment. After loosening the hex key screws by approx. 2 turns, the U-bracket can be moved back and forth in its keyway for gravity adjustment and it is turnable for right and left hand use.

The daylight flood light HEDLER DX15 and the focusable daylight HEDLER DF15 use AC of 230 V and modern metal halide 150 W SE T bulbs, which can be re-ignited after 2 - 3 minutes while the cooling down has started by switching-off the light unit. As a special feature, the HEDLER DX15 and the HEDLER DF15 do not have a fan, which means they suit ideal for original sound recording.

The daylight flood light HEDLER DX25 and the focusable daylight HEDLER DF25 use AC of 110 - 230 V and modern metal halide 250 W SE T bulbs, which can be re-ignited after 2 - 3 minutes while the cooling down has started by switching-off the light unit. The HEDLER DX25 and the HEDLER DF25 have an electronical cooling, which means they suit ideal for original sound recording.

On its front side, the aluminium housing holds the Fresnel lens with its protective grid (HEDLER DF15 / HEDLER DF25) or a safety glass (HEDLER DX15 / HEDLER DX25). Additionally there are the Uni-Adapt studs and the QuickFit adapter for attaching reflectors.

Light units of the HEDLER DX- / DF-range can be equipped optionally with all the latest original Hedler reflectors and softboxes. Because of the QuickFit adapter attaching a reflector or softbox is extremely comfortable:

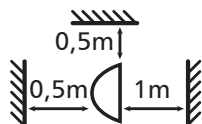
Interchangeable reflectors with bayonet ring can be attached in the following way: place the rim of the ring into the guide grooves of the upper studs and the round opening over the cone-shaped bolt, and lock it by a turn to the left. To attach the rotatable 4-Leaf barndoors or a MaxiSoft folding reflector, place the rim of the ring into the guide grooves of the upper studs, and then push the complete reflector towards the QuickFit's cone-shaped bolt until the ring locks in the bolt's groove. Detach the reflector by lifting the QuickFit's handle, moving the lower side of the reflector away from the light unit's housing, and then lifting the reflector's ring out of the guide grooves of the upper studs.

The focusing option of the light units HEDLER DF15 and HEDLER DF25 allows to adjust the light beam from spot up to flood light characteristic. Simply turn the focusing knob located at the back of the housing and the size of the light beams diameter can be adjusted precisely to your lighting needs or ideas - intuitively.

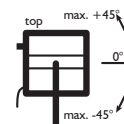
## OPERATION MANUAL

### TECHNICAL DATA DX15

Type: DX15	Voltage: 230 V ~ 2,0A 50/60 Hz	Power: 150 Watt	Risk group: I-RG
Color: CRI > 95	Kelvin: 5600K Safety class system: I	Protection category: IP30	
Weight: 2600g	Ambient temperature (Ta): -15° - +40° C	Surface temperature: 85°C	
Light stand attachment: 5/8"	Safety glass code: < 2051 >	Light unit code: < 1511 >	Bulb code: < 1501 >



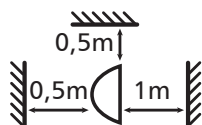
**Safety clearance:**  
Under any circumstances do not under-run the safety clearances given within the graphic to inflammable material!



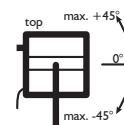
**Position:**  
Tilt light unit max. 45° upwards/downwards in operation!

### TECHNICAL DATA DF15

Type: DF15	Voltage: 230 V ~ 2,0A 50/60 Hz	Power: 150 Watt	Risk group: I-RG
Color: CRI > 95	Kelvin: 5600K Safety class system: I	Protection category: IP30	
Weight: 2900g	Ambient temperature (Ta): -15° - +40° C	Surface temperature: 85°C	
Light stand attachment: 5/8"	Fresnel lens code: < 6507 >	Light unit code: < 1516 >	Bulb code: < 1501 >



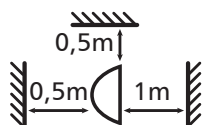
**Safety clearance:**  
Under any circumstances do not under-run the safety clearances given within the graphic to inflammable material!



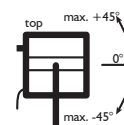
**Position:**  
Tilt light unit max. 45° upwards/downwards in operation!

### TECHNICAL DATA DX25

Type: DX25	Voltage: 110 - 230 V ~ 2,0A 50/60 Hz	Power: 250 Watt	Risk group: I-RG
Color: CRI > 95	Kelvin: 5600K Safety class system: I	Protection category: IP30	
Weight: 2720g	Ambient temperature (Ta): -15° - +40° C	Surface temperature: 85°C	
Light stand attachment: 5/8"	Safety glass code: < 2051 >	Light unit code: < 2516 >	Bulb code: < 1502 >



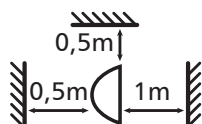
**Safety clearance:**  
Under any circumstances do not under-run the safety clearances given within the graphic to inflammable material!



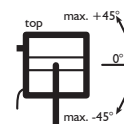
**Position:**  
Tilt light unit max. 45° upwards/downwards in operation!

### TECHNICAL DATA DF25

Type: DF25	Voltage: 110 - 230 V ~ 1,0A 50/60 Hz	Power: 250 Watt	Risk group: I-RG
Color: CRI > 95	Kelvin: 5600K Safety class system: I	Protection category: IP30	
Weight: 2990g	Ambient temperature (Ta): -15° - +40° C	Surface temperature: 85°C	
Light stand attachment: 5/8"	Fresnel lens code: < 6507 >	Light unit code: < 1625 >	Bulb code: < 1502 >



**Safety clearance:**  
Under any circumstances do not under-run the safety clearances given within the graphic to inflammable material!



**Position:**  
Tilt light unit max. 45° upwards/downwards in operation!

## OPERATION MANUAL

### **BULBS** (light units HEDLER DX15 and HEDLER DX25)

**To replace the bulb:** please, make sure that the housing and the bulb of the DX15 / DX25 has cooled off before interchanging the bulb, otherwise there is a risk of burning! Always disconnect the DX15 / DX25 from the power supply before interchanging the bulb. Loosen the screw that holds the clip and turn the clip sideways, which is securing the safety glass and remove the safety glass. Make sure that the bulb has cooled down before pulling it out of the socket with a forward motion. Push the new bulb into place, making sure that the pins are aligned correctly into the socket. Please, make sure that the bulb is in the correct position before replacing the safety glass. Replace the safety glass and turn the clip into the opposite direction until it secures the safety glass and handtighten the screw.

Please, note that a metal halide bulb may only be used with the safety glass in its place.

### **NEW BULBS - HEDLER DX15 and HEDLER DF15 - IMPORTANT TECHNICAL NOTE**

The HEDLER DX15 / HEDLER DF15 is equipped with a bulb that delivers a colour temperature of approx. 5600 Kelvin. To deliver this colour temperature range more stable the bulb has to be in operation for several hours. Because of that, we strongly recommend to "burn-in" a new bulb for at least 3 (three) hours. After this "burning-in" the bulb should deliver a more stable colour temperature.

The following type of bulbs can be used with the HEDLER DX15 / HEDLER DF15:

HEDLER BA 150 W / 6000 h = 5600 K metal halide bulb / DAYLIGHT / Code < 1501 >

### **NEW BULBS - HEDLER DX25 and HEDLER DF25 - IMPORTANT TECHNICAL NOTE**

The HEDLER DX25 / HEDLER DF25 is equipped with a bulb that delivers a colour temperature of approx. 5600 Kelvin. To deliver this colour temperature range more stable the bulb has to be in operation for several hours. Because of that, we strongly recommend to "burn-in" a new bulb for at least 3 (three) hours. After this "burning-in" the bulb should deliver a more stable colour temperature.

### **BULBS** (light units HEDLER DF15 and HEDLER DF25)

**To replace the bulb:** please, make sure that the housing and the bulb of the DF15 / DF25 has cooled off before interchanging the bulb, otherwise there is a risk of burning! Always disconnect the DF15 / DF25 from the power supply before interchanging the bulb. Unscrew the socket screw of the cover plate guard. The cover plate guard is located on the housings upper side, its socket screw is located at the flange which faces towards the housings backside. To unscrew the socket screw, use the socket wrench which was delivered with the DF15 / DF25. After loosening the socket screw completely remove the cover plate guard.

Turn the focusing knob until the DF15 / DF25 has its maximum spot light position. Pull the defective bulb out of the socket, after doing so push the new bulb carefully into the socket, observing instructions by the bulb manufacturer.

After pushing the bulb into its socket, replace the cover plate guard. Make sure that its lug is located correctly into the housings notch. Afterwards install the socket screw into the housings thread and tighten it hand-tight. Please, before taking the HEDLER DF15 / DF25 in operation, make sure that the cover plate guard is mounted correctly!

### **FRESNEL LENS** (light units HEDLER DF15 and HEDLER DF25)

**To replace the Fresnel lens:** please, make sure that the housing of the DF15 has cooled off before interchanging the Fresnel lens, otherwise there is a risk of burning! Always disconnect the DF15 from the power supply before interchanging the Fresnel lens. Unscrew the four socket screws of the housings front plate and remove the front plate with the Fresnel lens. Unscrew the securing screws of the Fresnel lens and replace the defective one with an original Hedler Fresnel lens only. After replacing the Fresnel lens tighten its securing screws hand-tight. Attach the front plate at the housing and tighten the front plates four securing screws. Please, before taking the HEDLER DF15 in operation, make sure that the front plate is mounted correctly!

### **FOCUSING the HEDLER DF15 and the HEDLER DF25**

To focus the HEDLER DF15s light beam turn the focusing knob anti clock-wise (increased floodlight characteristic) or clock-wise (increased spotlight characteristic) to adjust the light beams size.

### **SAFETY GLASS** (light units HEDLER DX15 and HEDLER DX25)

**To replace the safety glass:** please, make sure that the housing of the HEDLER DX15 / HEDLER DX25 has cooled off before interchanging the safety glass, otherwise there is a risk of burning! Always disconnect the HEDLER DX15 / HEDLER DX25 from the power supply before interchanging the safety glass. Unscrew the securing screw, turn the clip sideways which is securing the Borofloat™ safety glass and remove the glass. Replace the safety glass with a new one, turn the clip sideways into the opposite direction until it secures the Borofloat™ safety glass and tighten the securing screw. Please, before taking the HEDLER DX15 / HEDLER DX25 in operation, make sure that the safety glass and clip is mounted correctly and its clip is tightened.

## OPERATION MANUAL

### ACCESSORIES

It is recommended to use light units of the HEDLER Profilux<sup>®</sup> LED<sup>1000</sup> range in combination with an original HEDLER 4-Leaf barndoor 360° or one of the HEDLER accessory reflectors only. This permits adjusting the light beam to the requirements of any situation. In addition to the reflectors MaxiNorm, MaxiSun, MaxiBrite, MaxiBeauty and MaxiBackground or the MaxiSoft folding reflectors (=softboxes) 30 x 30cm, 50 x 50cm, 70 x 70cm, 90 x 90cm, L110 x 45cm and Octagon 100cm, the HEDLER 4-Leaf barndoor 360°, reflex umbrellas and grids for several softboxes/reflectors are available. Additionally, the MaxiSpot 65 and MaxiSpot 130 are available for effect lighting.

Please note: while in operation reflectors will heat up, some of them very much: there is a risk of serious burning if touched (intentionally or unintended).

### HEDLER WARRANTY

All Hedler equipment is fully guaranteed against any material or manufacturing defects for three years after date of purchase. Parts made out of glass, fuses, halogen bulbs, flash tubes, Pyrex<sup>®</sup> coverings and single cell LED modules are not covered by this warranty.

### MAINTENANCE and REPAIR

For a secure operation of light units they have to be maintained. Therefore: before using light units they have to be checked visually and an electrical safety check has to be done every twelve month. The results of this check have to be documented and archived. If repair is required, please, contact your dealer, the authorized distributor in your country or the Hedler factory directly. Please note, that a pre-dismantled light unit could cause increased repair costs.

### CHECK

All HEDLER light units are tested at HEDLER Systemlicht GmbH according to DIN 0701/0702 with protocol I.

### PLEASE NOTE - SPECIAL SET-UP ADVICE

Light units of the HEDLER DX- and DF-range have an up side and an underside, setting-up the light unit it is important to take care of the correct position of these sides. The light unit(s) is/are set-up correctly, if the QuickFit Adapter (located at the front side of the housing) is located beneath the bulb respectively the safety glass (as shown on the photograph) or the Fresnel lens.

To ensure a continuous operation, the light units of the HEDLER DX- and DF-range have to be set-up / operated in the position described respectively as shown on the photograph.

If you take the light unit in operation in an upside-down set-up, the internal automatic temperature safety switch will (according to the ambient conditions) switch off the light unit after some operation time until it has cooled down. This is not a failure or a maloperation of the light unit(s) of the HEDLER DX- and DF-range, it is a protection shutoff for the internal electronic ballast to prevent overheating.



Set-up correctly - shown for the HEDLER DX25.

## Safety instructions for Hedler light units and accessories

The following safety instructions are valid for Hedler light units and their accessory. Please, read these safety instructions completely before setting up a Hedler light unit and/or putting Hedler light unit(s) into operation. Please contact Hedler Systemlicht GmbH, 65594 Runkel directly, if you do have a technical question concerning Hedler light units and/or Hedler accessories. Please keep these safety instructions close in reach, if necessary you can download them from our website [www.hedler.com](http://www.hedler.com) as a PDF.

Hedler light unit(s), Hedler reflectors, softboxes, reflex umbrellas and/or Hedler accessories are designed for professional studio or indoor use only. Never use Hedler light unit(s), Hedler reflectors, softboxes, reflex umbrellas and/or Hedler accessories outdoors.

## Setting up and putting into operation

To put Hedler light unit(s) into operation it/they have to be set up, mounted, placed, secured and monitored appropriately.

- Always use a Hedler light unit in combination with a steady and secure standing light stand which has a loading capacity that is adequate for the weight of the light unit plus cable plus accessory/accessories. Always work within the light stand's loading capacity, especially if you are using, or plan to use, large and/or heavy folding reflectors.
- Appropriate action(s) to secure light stand(s) are (for example):
  - - mounting the light stand legs to the (stage) floor,
  - - weight down the light stand legs with appropriate filled sand bags for example,
  - - blockade the light stand area.
- Please note the permitted tilting of the Hedler light unit(s) of max. 45° upwards and max. 45° downwards.
- Set up a Hedler light unit - light stand combination on leveled floor only. Please make sure for tilt resistance while setting up / taking down and while in operation. Please make sure for an antislip stand while setting up / taking down and while in operation.
- For light unit(s) in operation the ambient temperature should not underrun -15°C (5°F) or exceed approx. 35°C (95°F).
- Acclimatisation: Avoid condensation problems because of high variations of temperature. If there are high variations of temperature do not use the Hedler light unit(s).
- Use Hedler light unit(s) in hospital(s), museum(s), factory (factories) asf. with permission of the appropriate / responsible public authority, administration, company management or business management only.
- If not taking care of this safety instructions there is in particular a serious risk of squeezing, cutting and/or burning caused by overthrowing, slipping or other reason(s) because of uncontrolled/unwanted movements of a light unit(s) while setting up / taking down and/or while in operation.
- Always use a double securing like a safety wire, if you mount a Hedler light unit overhead, which has a loading capacity that it could be loaded with the weight of the mounted light unit incl. accessory multiplied by five (for example: (light unit 4.5 kg + reflector 1.2 kg) \* 5 = 28.5 kg - for this case the safety wire to use must have a loading capacity of minimum 28.5 kg).
- Before putting a Hedler light unit into operation check all safety and/or positioning and/or light stand screws for being screwed in securely and/or hand-tight.
- Always keep a minimum distance of 100 cm between the safety glass (or accessories) and any combustible materials and/or any inflammable liquids, gases or explosives when a Hedler light unit is in use.
- Never use a Hedler light unit near any inflammable liquids, gases, materials or explosives that may be ignited by heat or spark.
- If you light through glass surfaces, windows and decoration surfaces keep appropriate distances between the light unit(s) and these materials, because these materials can burst if overheated and shatter could be a risk of injuries.
- Never store any combustible material(s) and/or any inflammable liquids, gases or explosives near any Hedler light unit(s).
- Never touch a Hedler light unit with wet hand and/or feet.
- Never use a Hedler light unit in extremely dusty nor in exceptionally humid and/or wet conditions.
- Never obstruct the forced air cooling (intakes or exhausts) in any way when the Hedler light unit is in use.
- Never obstruct the cooling intakes or exhausts in any way when the Hedler light unit is in use.
- Under no circumstances - do not block the cooling fan of a Hedler light unit.

- Never obstruct any opening of the housing of a Hedler light unit. Never stick any item(s) into any opening of the housing of a Hedler light unit. Otherwise there is the serious risk of an electrical shock, of a failure malfunction of the Hedler light unit, a short-circuit and/or a fire.
- Never carry a Hedler light unit by its power cord and/or its accessories.
- Always avoid the risk of a trip hazard caused by the power cord(s). If power cord(s) has/have to be layed down to the floor to connect the light unit(s) to the power supply: if possible do not so without appropriate marking or covering of the power cord(s).
- Always take care not to squeeze, to overrun, to stretch and/or to buckle the power cord of the Hedler light unit.
- Always take care that the power cord of a Hedler light unit is not worn out and/or is damaged in any way.
- Always take care not to cause a damage of the power cord of a Hedler light unit because of thermic, mechanical and/or chemical reason(s). Avoid such a risk under any circumstances.
- Never use a Hedler light unit with a defective power cord and/or plug. Replacement of a defective power cord has to be done by Hedler Systemlicht GmbH or an authorized specialist shop only. Never use a Hedler light unit with a „repaired“ power cord. A defective power cord must be replaced.
- Some of the Hedler continuous light units do have a high power consumption. Always take care, that the power supply is designed for such a high power consumption.
- Before use check your Hedler product for possible damage(s):

Component:	possible damage(s):
housing, lens, safety glass	crack, split, deformation
power cord	deformation, isolation damage, charred
power plug, mains plug	deformation, broken, charred
bracket and handle	not tightend, sliding block broken, brake disc doesn't work (correctly)

### Operation

- Never use a Hedler light unit with a defective safety glass, a defective Pyrex® cover, a defective flash bulb, defective bulb(s) and/or defective fuse(s).
- Never put a Hedler light unit into operation with a defective safety glass, a defective Pyrex® cover, a defective flash bulb, defective bulb(s) and/or defective fuse(s).
- Under any circumstances keep the minimum safety distance(s) given on the identification plate and / or the safety label to avoid damages caused by light beam(s) and / or thermal radiation and / or heat radiation to person(s), animal(s) and / or item(s) and / or object(s).
- In the case of a defect or damage of the safety glass, the Pyrex® cover, the bulb(s), the flash bulb and/or the fuse(s) of a Hedler light unit (particularly while it is in operation): switch of the light unit immediately, disconnect it from the power supply, let it cool down completely and replace the defective safety glass, Pyrex® cover, the bulb(s) and/or fuse(s) with the intended original Hedler spare part. Changing/replacing a flash bulb of a Hedler light unit is not allowed to be done by a customer. Changing/replacing of a flash bulb has to be done by Hedler Systemlicht GmbH only.
- Never use a Hedler light unit unattended.
- Always disconnect Hedler light unit(s) from the power supply if it/they is/are not in use or in operation.
- Hedler light units are not designed and they are not suitable for the use as a room lighting.
- Never use a Hedler light unit for any reason other than photographic or cinematic lighting.
- While in operation avoid to jar heavily, moving jerkily and/or overthrowing Hedler light units - this could cause breaking, fragmenting into parts and/or bursting of the bulb(s) and/or flash bulbs and/or parts made out of glass; because of this there is a serious risk of cutting and/or burning in particular and the risk of damage to property like combustion, discoloring/staining, sparking, and so on.
- In the case of overthrowing, falling down and/or jaring heavily a Hedler light unit it has to be checked by Hedler Systemlicht GmbH or a specialist shop authorized by Hedler Systemlicht GmbH for damages.

### Safety glass, Pyrex® cover and flash bulbs, bulbs and fuses

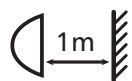
- Before performing any kind of maintenance work on the light unit - always disconnect the Hedler light unit from the power supply and let cool down the light unit completely.

- Before changing a safety glass or a Pyrex® cover - always disconnect the Hedler light unit from the power supply and let cool down the light unit completely.
- Before changing a bulb and/or fuse - always disconnect the Hedler light unit from the power supply and let cool down the light unit completely.
- For replacing a safety glass or Pyrex® cover - use the intended original Hedler spare parts only.
- For replacing a bulb and/or fuse(s) - use the intended original Hedler spare parts only.
- Never use a „repaired“ fuse.
- Changing/replacing a flash bulb of a Hedler light unit is not allowed to be done by a customer. Changing/replacing of a flash bulb has to be done by Hedler Systemlicht GmbH only.

## Additional safety instructions and explanation for symbols

- Hedler light units produce a very intensive and bright beam of light: never look directly into the bulb and/or flash bulb. while it is in operation. Never light or flash directly into the eye(s) of a human or an animal, this can cause permanent damage to the eye(s) or health threat(s) (like sunburn).
- Please note, dazzle / glare caused by continuous light unit(s) or flash light unit(s) can cause an immediate (partly and/or temporarily) loss of vision - this can lead to accident(s) (traffic, stairs, and so forth).
- Before (inter-)changing accessories, light modifier(s) or bulb(s) - switch off the light unit(s) and let it cool down completely.
- Some Hedler light units and/or Hedler reflectors, parts of softboxes and reflex umbrellas and some accessories can heat up extremely while in operation: there is a serious risk of burning. Never touch these parts while they are in operation. (Please, use heatresistant and heatprotecting gloves to avoid burning!).
- Please let cool down Hedler light units and/or Hedler reflectors, parts of softboxes and reflex umbrellas and some accessories completely after using them and before packing them away: not doing so can cause serious burnign and/or the risk of sparking.
- Not used as intended and/or in the case of inappropriate use of Hedler light units and/or Hedler reflectors, parts of softboxes and reflex umbrellas and accessories there is the serious risk of a (deadly) electrical shock.
- Hedler light units, Hedler reflectors, softboxes, reflex umbrellas and/or Hedler accessories are no toys, they are unsuitable for use by children. Always keep Hedler light units, Hedler reflectors, softboxes, reflex umbrellas and/or Hedler accessories out of the reach of children.

## Explanation for symbols:



Minimum  
distance



Heat  
°C / °F



Volt /  
Voltage



Watt /  
Demand



Min. load  
capacity



Warning  
Voltage



CE



Bin  
WEEE

## Maintenance

For a secure operation of light units they have to be maintained. Therefore: before using light units they have to be checked visually and an electrical safety check has to be done every twelve month. The results of this check have to be documented and archived.

## Liability limitation

For all injuries and/or damages to people and/or objects, which are caused by using Hedler products in a way that the are not intended for the user is liable - not the manufacturer.

If you do have a question to set up and/or to operate Hedler light units, Hedler reflectors, softboxes, reflex umbrellas and/or Hedler accessory, please ask at Hedler Systemlicht GmbH directly or at the Hedler authorized photographic specialised dealer (a list with this dealers you will find on our website [www.hedler.com](http://www.hedler.com)).